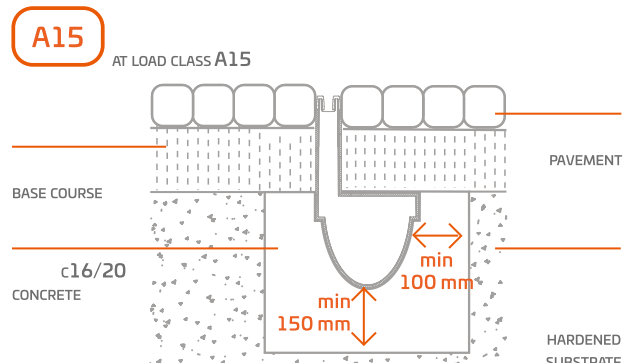
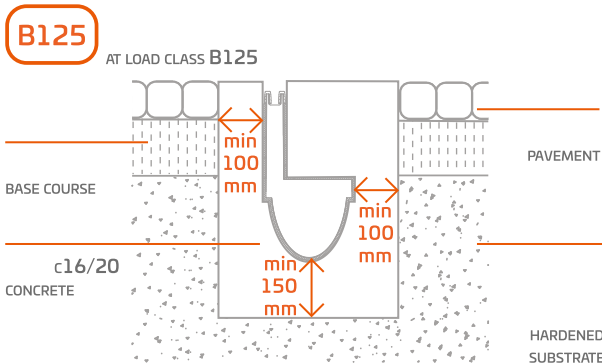
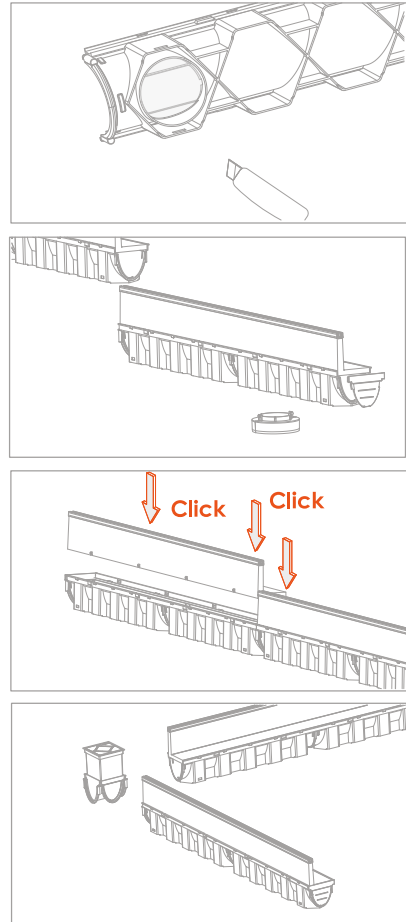


1. Mark layout of the linear drainage with a line
2. Dig a trench with a depth of 32.5cm and width of 30cm. Fill the trench with compacted sand as a sub-structure under a concrete bedding.
3. Make a concrete bedding with a minimum height of 15cm with c16/20 concrete. Wait 60 minutes until concrete will reach right consistency.

Prepare all components for assembling.

4. Connect drain channels, put end caps and outlet on. Join outlet with sewage pipe. Check the channel alignment. Before the concrete bedding dries, lay channels with grates on concrete bed and level them. It is recommended that the channels position should be 2-5mm below the surface level, this guarantees optimal water collection.

5. After binding the concrete bedding, carefully fill rest of trench with concrete. Pour concrete 10cm wide from the right and left side of the drainage.



LOAD CLASS	LOAD, KN	EXPLOATATION CONDITIONS
A15	15	PEDESTRIAN AND BICYCLE PATHS, GREEN AREAS, SUCH AS PARKS, GREEN SQUARES, AREAS NEAR HOUSES.
B125	125	AREAS OF INCREASED PEDESTRIAN MOVEMENT, CAR PARK AREAS FOR CARS AND LIGHT TRUCKS, GARAGES.